

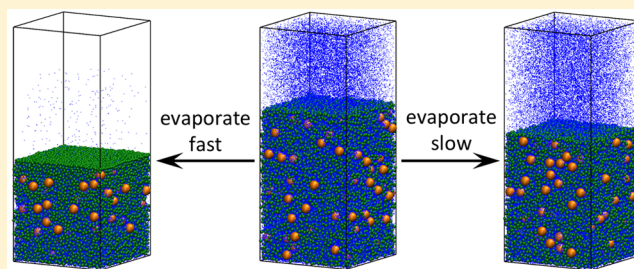
Stratification in Drying Films Containing Bidisperse Mixtures of Nanoparticles

 Yanfei Tang,[†] Gary S. Grest,[‡] and Shengfeng Cheng^{*,†}
[†]Department of Physics, Center for Soft Matter and Biological Physics, and Macromolecules Innovation Institute, Virginia Polytechnic Institute and State University, Blacksburg, Virginia 24061, United States

[‡]Sandia National Laboratories, Albuquerque, New Mexico 87185, United States

Supporting Information

ABSTRACT: Large scale molecular dynamics simulations for bidisperse nanoparticle suspensions with an explicit solvent are used to investigate the effects of evaporation rates and volume fractions on the nanoparticle distribution during drying. Our results show that “small-on-top” stratification can occur when $Pe_s \phi_s \gtrsim c$ with $c \sim 1$, where Pe_s is the Péclet number and ϕ_s is the volume fraction of the smaller particles. This threshold of $Pe_s \phi_s$ for “small-on-top” is larger by a factor of $\sim \alpha^2$ than the prediction of the model treating solvent as an implicit viscous background, where α is the size ratio between the large and small particles. Our simulations further show that when the evaporation rate of the solvent is reduced, the “small-on-top” stratification can be enhanced, which is not predicted by existing theories. This unexpected behavior is explained with thermophoresis associated with a positive gradient of solvent density caused by evaporative cooling at the liquid/vapor interface. For ultrafast evaporation the gradient is large and drives the nanoparticles toward the liquid/vapor interface. This phoretic effect is stronger for larger nanoparticles, and consequently the “small-on-top” stratification becomes more distinct when the evaporation rate is slower (but not too slow such that a uniform distribution of nanoparticles in the drying film is produced), as thermophoresis that favors larger particles on the top is mitigated. A similar effect can lead to “large-on-top” stratification for $Pe_s \phi_s$ above the threshold when Pe_s is large but ϕ_s is small. Our results reveal the importance of including the solvent explicitly when modeling evaporation-induced particle separation and organization and point to the important role of density gradients brought about by ultrafast evaporation.



Evaporation is a ubiquitous process that plays an important role in many diverse fields including climate, environment, and industry.¹ It is also frequently used in material fabrications. For example, controlled evaporation is used to make polymer thin films,^{2,3} polymeric particles,⁴ and nanocomposites^{5,6} and to assemble building blocks including particles into superstructures.^{7–12} In a relatively simple case where a suspension containing particles undergoes drying, the structure of the final dry film is determined by two competing factors: the diffusion of the particles and the receding motion of the liquid/vapor interface induced by solvent evaporation.^{13,14} The competition is quantified by a dimensionless Péclet number, $Pe = Hv/D$, where H is the thickness of the interfacial region affected by evaporation and can be taken as the film thickness for thin films, D is the diffusion constant of the particles, and v is the receding speed of the interface. Routh and Zimmerman derived the governing equation for the evolution of particle volume fractions, which is referred to as the RZ model hereafter, and obtained numerical solutions at various Péclet numbers.¹³ Their analyses showed that when $Pe \gg 1$, the particles are trapped and accumulated near the liquid/vapor interface, forming a skin layer since their diffusion is slow compared to the recession of the interface. However, when $Pe \ll 1$, the diffusion of the

particles is faster than the motion of the interface and the particles remain almost uniformly distributed in the drying film.

Since the diffusion constant of a particle depends on its size, the situation becomes particularly intriguing when the suspended particles are polydisperse. From the Einstein–Stokes relationship, $D = k_B T / (3\pi\eta d)$, where k_B is the Boltzmann constant, T the temperature, η the solvent viscosity, and d the particle diameter. The Péclet number is thus proportional to d . The simplest polydisperse system is a suspension containing particles of two sizes d_l and d_s with a size ratio $\alpha = d_l/d_s > 1$. Trueman et al. extended the RZ model to such bidisperse suspensions and combined numerical simulations and experiments to show that the larger particles accumulate while the smaller ones are depleted near the interface when $Pe_l > 1 > Pe_s$.^{15,16} This is called “large-on-top” stratification. Using the extended RZ model, Atmuri et al. studied the effects of interparticle interactions among the same species (i.e., the particles of the same size) on the particle distribution during drying of the suspension.¹⁷ They also

Received: April 24, 2018

Revised: May 20, 2018

Published: May 23, 2018

investigated suspensions containing particles of the same size, but some of them are neutral while the others are charged. Their numerical simulations showed that in this case the charged particles are depleted at the receding interface because of the repulsion between likely charged particles. As a result, neutral particles remain and accumulate near the interface. This finding is consistent with an earlier study of Nikiforov et al.,¹⁸ who studied a latex blend of charged and neutral particles of roughly the same size and found that stratification between the two species readily occurred after drying of the film with the neutral particles accumulating immediately below the film/air interface.

From these previous studies, it was believed that in bidisperse particle suspensions stratification would likely be produced if the Péclet numbers of the two components were on different sides of unity (e.g., $Pe_l > 1 > Pe_s$) and the particles with a smaller diffusivity (e.g., the larger particles) would accumulate at the top of the dried film.^{15,16} However, Fortini et al. recently discovered the occurrence of a novel “small-on-top” stratifying scenario when $Pe_l \gg Pe_s \gg 1$.^{19,20} Namely the smaller particles accumulate near the interface when the evaporation is very fast for both large and small particles. They proposed that for very fast evaporation both large and small particles first accumulate just below the receding interface, creating gradients of their concentration distributions in the direction perpendicular to the film. The concentration gradients lead to gradients of the associated osmotic pressure, which cause the particles to drift. However, the drift velocity is asymmetric for the large and small particles. Fortini et al. argued that if the volume fraction of small particles is large enough to make them the majority phase just below the film/air interface, then the large particles will drift away from this region faster than the small particles roughly by a factor of $\alpha^2 - 1$. The net result is an accumulation of small particles at the top of the drying film. The finding of Fortini et al. seems to be consistent with a phenomenon observed earlier by Luo et al., who studied drying aqueous dispersions containing a mixture of latex particles with a diameter ~ 550 nm and much smaller ceramic nanoparticles (NPs) and found an enrichment of NPs in interstitial spaces among latex particles near the top surface of the drying film.²¹ Howard et al. performed numerical simulations based on an implicit solvent model, similar to the one used by Fortini et al., to systematically study the effects of particle size ratios and evaporation rates on stratification.²² They found that “small-on-top” stratification can persist even when the Péclet numbers are of order 1 and noticed an unexpected accumulation of the larger particles near the substrate at small evaporation rates (i.e., small ν).

To better understand stratifying phenomena, Zhou, Jiang, and Doi proposed a diffusion model, referred to as the ZJD model hereafter, for mixtures of hard spheres up to second virial coefficients.²³ The equations describing the time evolution of particle concentrations in the ZJD model are similar to those in the extended RZ model, but the expressions for chemical potential are different.^{15,23} Analyses and numerical solutions of the ZJD model revealed that the “small-on-top” structure is created by the cross-interactions between particles of different sizes, which affect the larger particles much more strongly than the smaller ones roughly by a factor of α^3 .²³ A state diagram in the Pe_s - ϕ_s plane was predicted where stratification occurs if $\alpha^2(1 + Pe_s)\phi_s > 1$, with ϕ_s being the initial volume fraction of the smaller particles.

Makepeace et al. recently combined experiments and simulations to test the ZJD model.²⁴ They found that at low particle concentrations the ZJD model fit their measurements and modeling data reasonably well while for concentrated suspensions the ZJD model significantly overpredicts “small-on-top” stratification, i.e., actual stratification occurs at α , Pe_s , and ϕ_s much larger than those predicted by the ZJD model. Liu et al. performed experiments on the drying of suspensions containing a mixture of larger polystyrene NPs and smaller silica NPs and identified “small-on-top” states via atomic force microscopy (AFM) characterization of the film surface.²⁵ Their results seem to fit the ZJD model, though their measurements are in the $Pe_l > 1 > Pe_s$ regime. Martín-Fabiani et al. showed that stratification can be turned on and off on demand by mixing smaller particles, whose size can be varied by changing the pH of the suspension, and larger particles with a fixed size.²⁶ At low pH, $\alpha \approx 7$ and “small-on-top” stratification occurs while at high pH, α decreases to about 4 and stratification is suppressed. Their work demonstrated the effects of high particle concentrations and the associated jamming that prevents the particles to stratify.

From the reported studies we now understand that stratifying phenomena in a drying suspension containing a bidisperse mixture of neutral particles depend on several factors including the evaporation rate of the solvent, the initial volume fractions of the particles, the particle size ratio, and the interactions between the particles.^{17,19,22–24} The ZJD model predicts that for the initial volume fractions only that of the smaller particles matters.²³ However, in previous simulations^{15–17,19,22,24} and theory²³ the solvent was treated as an implicit, uniform viscous background. Very recently, Sear and Warren used the Asakura–Oosawa model to study the drift of a large particle in a solute (i.e., small particle) gradient,^{27,28} taking into account the contribution from the solvent backflow to the pressure gradient, and showed that the analyses of Fortini et al. and the ZJD model based on an implicit solvent overestimate the drift velocity of large particles roughly by a factor of α^2 .²⁸ With this correction, their prediction is that “small-on-top” stratification occurs only when $Pe_s\phi_s \gtrsim 1$. Therefore, the threshold of Pe_s driving a system into the “small-on-top” regime at a given ϕ_s is higher than the ZJD prediction roughly by a factor of α^2 , which may provide an explanation of the finding of Makepeace et al. that the ZJD model tends to overpredict stratification.²⁴ Hereafter we refer to the work of Sear and Warren as the SW model. In another recent work,²⁹ Sear applied a gelation model originally developed by Okuzono and Doi for the drying of a polymer film³⁰ to stratifying phenomena and considered the jamming of particles at high volume fractions and the resulting dynamic arrest of particle motion, which occur when the accumulation of particles near a receding liquid/vapor interface surpasses the jamming point. In the Sear model, “small-on-top” stratification only occurs for a finite range of ϕ_s : $0.64/Pe_s < \phi_s < 0.2$. These studies thus point to the importance of including a solvent explicitly when studying the drying of a particle suspension. Furthermore, all the theoretical models developed so far are based on isothermal systems but our previous work revealed that temperature and density gradients can emerge in a fast evaporating liquid,³¹ whose roles in stratifying phenomena are unclear.

To fill the gap, here we report large-scale molecular dynamics (MD) simulations of the drying of bidisperse particle suspensions with an explicit solvent. To span regimes from $Pe_l \gg Pe_s \gg 1$ to $Pe_l \gg 1 \gtrsim Pe_s$, we use NPs with diameters 20

Table 1. Parameters for the 15 Systems Studied

system	N_l	N_s	ϕ_l	ϕ_s	H/σ	ζ	$v\tau/\sigma$	Pe_l	Pe_s
$\phi_{0.011}R_{30}$	200	1920	0.072	0.011	289.2	30	1.14×10^{-3}	109.7	27.4
$\phi_{0.011}R_5$	200	1920	0.072	0.011	289.2	5	2.05×10^{-4}	19.7	4.9
$\phi_{0.034}R_{30}$	200	6400	0.068	0.034	304.4	30	1.13×10^{-3}	114.3	28.6
$\phi_{0.034}R_5$	200	6400	0.068	0.034	304.4	5	2.04×10^{-4}	20.7	5.2
$\phi_{0.034}R_1$	200	6400	0.068	0.034	304.4	1	4.33×10^{-5}	4.4	1.1
$\phi_{0.068}R_{30}$	200	12800	0.068	0.068	306.5	30	1.04×10^{-3}	105.9	26.5
$\phi_{0.068}R_5$	200	12800	0.068	0.068	306.5	5	2.03×10^{-4}	20.8	5.2
$\phi_{0.068}R_1$	200	12800	0.068	0.068	306.5	1	4.21×10^{-5}	4.3	1.1
$\phi_{0.10}R_{30}$	200	19200	0.067	0.10	309.7	30	8.69×10^{-4}	89.7	22.4
$\phi_{0.10}R_5$	200	19200	0.067	0.10	309.7	5	1.96×10^{-4}	20.2	5.1
$\phi_{0.10}R_1$	200	19200	0.067	0.10	309.7	1	4.15×10^{-5}	4.3	1.1
$\phi_{0.13}R_{30}$	200	25600	0.067	0.13	307.2	30	7.61×10^{-4}	78.0	19.5
$\phi_{0.13}R_5$	200	25600	0.067	0.13	307.2	5	1.91×10^{-4}	19.6	4.9
$\phi_{0.16}R_{20}$	200	32000	0.065	0.16	317.8	20	6.37×10^{-4}	67.5	16.9
$\phi_{0.16}R_5$	200	32000	0.065	0.16	317.8	5	1.85×10^{-4}	19.6	4.9

and 5 times of that of the solvent. In particular, we focus on the role of the evaporation rate (i.e., Pe_s) and ϕ_s in controlling the distribution of NPs in the resulting dry films.

RESULTS AND DISCUSSION

All of our simulations have $N_l = 200$ large NPs (LNPs) of a diameter $d_l = 20\sigma$, where σ is the unit of length. The small NPs (SNPs) have a diameter $d_s = 5\sigma$, and their number, N_s , is varied from 1920 to 32 000. Further details of the simulations are given in the [Methods](#) section. All the NPs are initially dispersed in a liquid consisting of Lennard-Jones (LJ) particles of a size σ in equilibrium with its vapor in a rectangular box with dimensions $L_x \times L_y \times L_z$, where $L_x = 201\sigma$, $L_y = 201\sigma$, and $L_z = 477\sigma$. The number of LJ particles vary from about 7×10^6 for $N_s = 1920$ to about 5×10^6 for $N_s = 32 000$. The initial volume fraction of NPs is $\phi_i \equiv \pi N_i d_i^3 / (6L_x L_y H)$, where $i \in \{l, s\}$ and H is the film thickness at equilibrium. Evaporation of the solvent is implemented by removing the LJ particles in the deletion zone $[L_z - 100\sigma, L_z]$.³¹ The evaporation rate is controlled by setting the number of particles, ζ , removed every τ , where τ is the LJ unit of time. When the solvent evaporates into a vacuum, the evaporation rate is initially very high ($\zeta \sim 600$), then decreases with time, and finally reaches a plateau value corresponding to $\zeta \sim 20$ – 30 , which slightly depends on ϕ_s .³¹ For the drying NP suspensions studied in this paper, we set ζ constant and the values of ζ are varied to span very fast evaporation ($\zeta = 20$ or 30) to the slowest evaporation rate ($\zeta = 1$) accessible with current computational resources.³² We label each system as $\phi_{\phi_s}R_\zeta$ using the values of ϕ_s and ζ . For each system we directly follow the location of the liquid/vapor interface during evaporation and compute v , which quantifies the speed of evaporation. For diffusion constants, we take $D_l = 3 \times 10^{-3}\sigma^2/\tau$ from our previous study³³ and assume $D_s = D_l d_l/d_s = \alpha D_l$. The values of Péclet numbers can then be estimated. In particular, $Pe_s = \frac{Hv}{D_s} \approx \frac{v}{4 \times 10^{-5}\sigma/\tau}$. For the systems studied here, $v \approx 4\zeta \times 10^{-5}\sigma/\tau$. As a result, the values of ζ and Pe_s are close, the latter of which can thus be roughly read from the subscript of R in the system label $\phi_{\phi_s}R_\zeta$. Then $Pe_l = \alpha Pe_s = 4Pe_s$. All the systems and parameters are listed in [Table 1](#).

Snapshots of four NP suspensions under various evaporation rates are shown in [Figure 1](#). These four are picked as they are representative to demonstrate how the distribution of NPs in a drying film changes when the evaporation rate (i.e., Pe_s) and ϕ_s

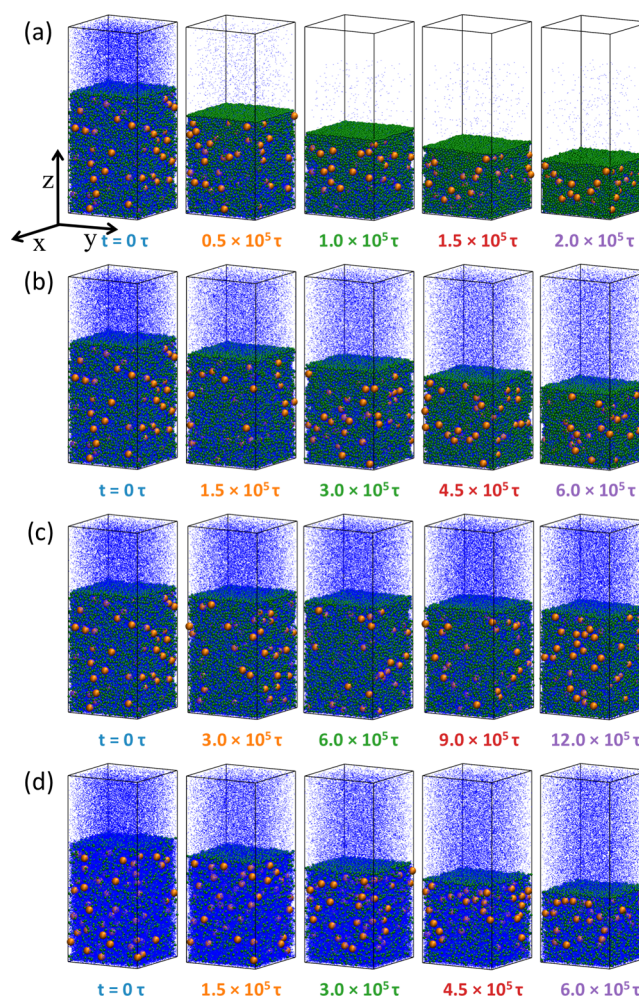


Figure 1. Snapshots of the systems during evaporation for (a) $\phi_{0.10}R_{30}$, (b) $\phi_{0.10}R_5$, (c) $\phi_{0.10}R_1$, and (d) $\phi_{0.034}R_5$. Time is indicated below each snapshot with $t = 0\tau$ for the equilibrium state prior to evaporation. Corresponding density profiles are plotted in [Figure 2](#). Color code: LNPs (orange), SNPs (green), and solvent (blue). For clarity, only 5% of the solvent beads are visualized. In the last frame the volume fractions of NPs are (a) $\phi_l = 0.15$, $\phi_s = 0.23$; (b) $\phi_l = 0.11$, $\phi_s = 0.16$; (c) $\phi_l = 0.080$, $\phi_s = 0.12$; and (d) $\phi_l = 0.11$, $\phi_s = 0.057$.

are varied. Snapshots of the other 11 systems can be found in the [Supporting Information](#). We first focus on the systems

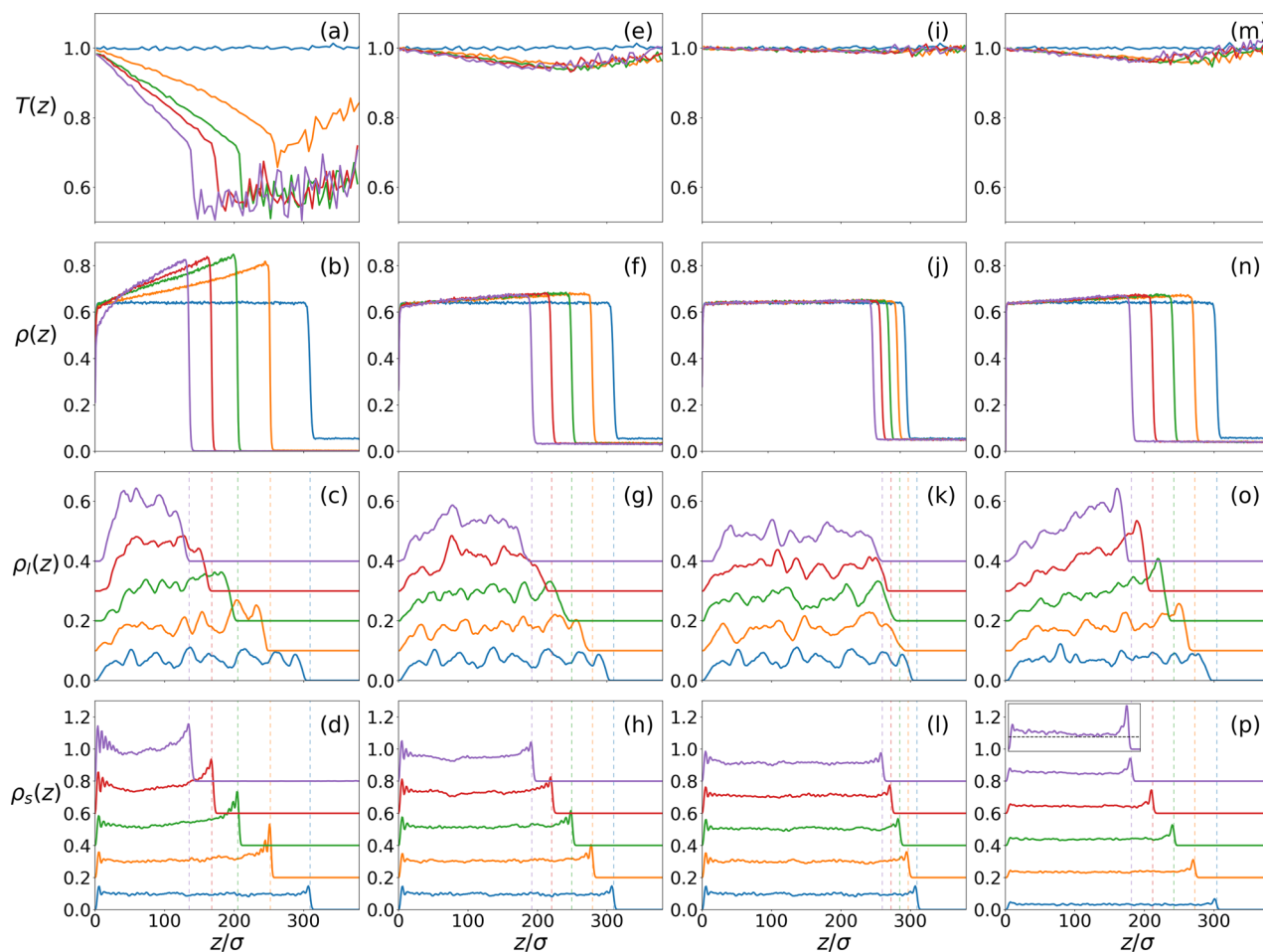


Figure 2. Temperature profile during evaporation (top row) and density profiles for the solvent (second row), LNPs (third row), and SNPs (bottom row) for $\phi_{0.10}R_{30}$ (a–d), $\phi_{0.10}R_5$ (e–h), $\phi_{0.10}R_1$ (i–l), and $\phi_{0.034}R_5$ (m–p). For each system, each set of curves of the same color corresponds to the snapshot with time indicated in the same color in Figure 1. The vertical dashed lines indicate the location of the liquid/vapor interface. For clarity, the density profiles for LNPs (SNPs) are shifted upward by $0.1m/\sigma^3$ ($0.2m/\sigma^3$) successively. The inset in (p) shows a weakly negative gradient of SNP density for $\phi_{0.034}R_5$ at time $t = 6 \times 10^5\tau$ with a dashed horizontal reference line.

$\phi_{0.10}R_{30}$, $\phi_{0.10}R_5$, and $\phi_{0.10}R_1$ with $N_s = 19\,200$ (Figures 1a–c) and investigate the role of evaporation rates. For the ultrafast evaporating system $\phi_{0.10}R_{30}$, the SNPs quickly accumulate and form a dense skin layer near the liquid/vapor interface, as shown in Figure 1a. However, the LNPs are also found to accumulate just below this interfacial layer of SNPs. When the evaporation rate is reduced by a factor of 6 in the system $\phi_{0.10}R_5$, the skin layer of SNPs becomes less distinct, though the SNPs still accumulate near the interface, as shown in Figure 1b. In this case the extent of accumulation for the LNPs just below the surface layer of SNPs diminishes significantly. As a result, the “small-on-top” stratification is enhanced in $\phi_{0.10}R_5$, in which the solvent evaporates more slowly than in $\phi_{0.10}R_{30}$. This trend is not predicted by the existing theories,^{19,23} which anticipate that “small-on-top” stratification should be suppressed and become less distinct when the evaporation rate is reduced. Below we will show that this unexpected behavior results from the density gradients of the solvent that develop during evaporation. When the evaporation rate is further reduced by a factor of 5 in the system $\phi_{0.10}R_1$, the accumulation of NPs near the interface almost disappears and the LNPs and SNPs are uniformly distributed in the drying film, as shown in Figure 1c.

Figure 1d shows the system $\phi_{0.034}R_5$, which has the same evaporation rate as $\phi_{0.10}R_5$ (Figure 1b), but ϕ_s is smaller by a

factor of 3. Compared to $\phi_{0.10}R_5$, the surface accumulation of SNPs during solvent evaporation is weaker and the enrichment of LNPs near the receding interface is much stronger in $\phi_{0.034}R_5$.

To further quantify how the distributions of the solvent, LNPs, and SNPs evolve during evaporation, we plot their density profiles in Figure 2 at various times corresponding to the snapshots in Figure 1. The density profiles for the remaining 11 systems can be found in the Supporting Information. The density is defined as $\rho_i(z) = n_i(z)m_i / (L_x L_y \delta z)$, where $n_i(z)$ represents the number of i -type particles in the spatial bin $[z - \delta z/2, z + \delta z/2]$ with the bin width $\delta z = \sigma$ and m_i is the mass of i -type particles. The unit of density is thus m/σ^3 . For a NP occupying several bins, we partition the NP mass to bins based on the partial volume of the NP enclosed by each bin. For computing the solvent density, the solvent particles are treated as point masses, and the excluded volume occupied by NPs in each spatial bin is subtracted.³⁴ To understand the density profiles of the solvent, we also include in Figure 2 (top row) the corresponding local temperature, $T(z)$, which is computed as the mean kinetic energy of solvent beads in the spacial bin $[z - 2.5\sigma, z + 2.5\sigma]$. The results clearly show evaporative cooling, especially for ultrafast evaporation rates, which leads to negative temperature gradients in the liquid

solvent. The calculation of temperature in an evaporating system, which is out of equilibrium, as well as the fact that $T(z)$ has a minimum at the liquid/vapor interface, is discussed in detail in ref 31.

Figure 2 shows quantitatively the trends that are qualitatively identified from Figure 1. It is noted that for all the systems at equilibrium there is always a slight density peak near the liquid/vapor interface for the SNPs since they are smaller and their centers can get closer to the interface. When the solvent evaporates very fast, both the LNPs and SNPs are found to accumulate near the interface, as shown in Figures 2c,d for $\phi_{0.10}R_{30}$. When the evaporation rate is reduced, the SNPs still accumulate near the interface, but the LNPs are almost uniformly distributed in the region below the surface layer where SNPs are concentrated (Figures 2g,h). As a result, the “small-on-top” stratification becomes more significant for $\phi_{0.10}R_5$. This change is accompanied by a change of the density profile of the solvent as the evaporation rate is reduced. As shown in Figure 2b for $\phi_{0.10}R_{30}$ with a ultrafast evaporation rate, the solvent density increases significantly at the liquid/vapor interface due to strong evaporative cooling (Figure 2a), leading to a large positive gradient of the density profile. The gradients are much smaller for $\phi_{0.10}R_5$ with a smaller evaporation rate (Figures 2e,f). In the systems studied here, the NPs are well solvated and form a uniform dispersion in equilibrium prior to solvent evaporation. A density gradient of the solvent that develops during evaporation induces a chemical potential gradient, which drives NPs to regions with a higher solvent density. Our simulations thus indicate a phoretic effect on NP motion when the solvent evaporates ultrafast. Hereafter we use the term “thermophoresis” to denote the drift of NPs under a density gradient of the solvent, which is caused by the thermal gradient in the evaporating solvent.³⁵ A similar effect associated with the density gradients of polymers was observed in our previous work where a polymer solution containing NPs underwent drying.³⁶

As the solvent evaporates, the liquid/vapor interface recedes, and the NPs with $Pe > 1$ have a tendency to accumulate near the interface. When the SNPs are the major phase and their accumulation at the interface leads to a concentration gradient that is large enough, the LNPs are pushed away by an osmotic pressure induced by the gradient of SNP concentration. This diffusio-phoretic mechanism is underlying the current physical models of “small-on-top” stratification.^{19,23,28,29} However, a positive gradient of solvent density can develop during evaporation because of evaporative cooling of the liquid/vapor interface, and its magnitude is large when evaporation is ultrafast. This gradient of solvent density tends to drive all NPs to the interface, but the thermophoretic effect is stronger for LNPs than for SNPs (see the Supporting Information for direct evidence of this behavior). The net effect of the positive gradient of solvent density is thus to push more LNPs toward the interfacial region. The competition between thermophoresis favoring more LNPs near the interface and a fast receding interface, which leads to SNP concentration at the interface and pushes LNPs out of this region via diffusio-phoresis, is the key to understand our results. For ultrafast evaporation ($\zeta = 30$), thermophoresis is significant, and we observe an accumulation of LNPs just below the skin layer of SNPs, as in the system $\phi_{0.10}R_{30}$ (Figures 2c,d). When the evaporation rate is reduced to $\zeta = 5$ as in the system $\phi_{0.10}R_5$, the density gradient of the solvent, as well as the temperature gradient, becomes much smaller (Figures 2e,f) and cannot overcome the concentration

gradient of SNPs any more in terms of transporting LNPs. Therefore, thermophoresis is strongly suppressed and the LNPs do not accumulate near the interface in $\phi_{0.10}R_5$, resulting in stronger “small-on-top” stratification (Figures 2g,h).

That the solvent density develops a positive gradient in the interfacial region during ultrafast evaporation is due to strong evaporative cooling at the interface,³¹ as shown in Figure 2 (top row). In this case the diffusion of the solvent toward the interface is driven by a temperature gradient. Evaporative cooling also makes NPs to diffuse more slowly near the receding interface, which increases the Péclet numbers of those NPs. This effect is stronger for higher evaporation rates which lead to stronger evaporative cooling. The Péclet numbers used in this paper are defined with the diffusion constants in the solvent at the bulk temperature and are thus the lower bounds of actual values. However, this simplification does not affect the results and conclusions presented in this paper, as discussed in more detail later.

When the evaporation rate is reduced, the degree of interfacial cooling decreases. More examples of the temperature profile at various evaporation rates are included in the Supporting Information. For low evaporation rates, the thermal conduction in the suspension is fast enough to maintain a uniform temperature profile and the density profile of the solvent is almost flat. This situation is realized in the system $\phi_{0.10}R_1$ (Figures 2i–l), where evaporation is not fast enough to enable SNPs to accumulate at the interface and there is no density gradient of the solvent to drive NPs into the interfacial region either. As a result, the NPs are almost uniformly distributed in the drying film for $\phi_{0.10}R_1$.

Comparison of $\phi_{0.10}R_5$ with $N_s = 19\,200$ and $\phi_{0.034}R_5$ with $N_s = 6400$ shows the effect of the initial volume fraction of SNPs, ϕ_s , on the evaporation-induced stratification. In both cases the evaporation rate is the same ($\zeta = 5$) and the density gradients of the solvent and the temperature gradients are similar (Figures 2e,f,m,n). However, the interfacial region in which SNPs are accumulated is wider for $\phi_{0.10}R_5$ which has a larger ϕ_s (compare Figures 2h,p). In $\phi_{0.10}R_5$ the LNPs are almost uniformly distributed in the region below the SNP-rich skin layer (Figure 2g), even though $Pe_1 \gg 1$. The underlying reason is that the diffusio-phoretic force due to the gradient of SNP concentration, which drives the LNPs away from the interface, almost balances the thermophoretic force from the small positive gradient of solvent density, which pushes the LNPs toward the interface. For $\phi_{0.034}R_5$ which has a much smaller ϕ_s , however, there is a strong accumulation of LNPs near the interface (Figure 2o), as ϕ_s is too small to yield a noticeable gradient of SNP concentration that is needed to balance the gradient of solvent density. In other words, ϕ_s is too small to enable diffusio-phoresis to neutralize thermophoresis. In the late stage of drying, the distribution of SNPs in $\phi_{0.034}R_5$ even shows a negative gradient, and $\rho_s(z)$ decreases slightly toward the interface (Figure 2p and inset), indicating “large-on-top” stratification. This trend is qualitatively consistent with the prediction of the existing theories that a transition from “small-on-top” to “large-on-top” will occur when ϕ_s is reduced.^{23,28,29}

Presently, there is actually no universally adopted criterion on how to identify and quantify stratification. In experiments, especially in those using surface characterization such as AFM measurements, an excess of small particles at the top surface is taken as a signature of “small-on-top” stratification as it is difficult to probe depth profiles of particle concentrations.^{24,25} However, this criterion is not suitable for our simulations as an

excess of SNPs at the surface of the film even occurs in equilibrium. In theory, a “small-on-top” state is usually defined as the one in which large particles have a negative concentration gradient going toward the surface of the film.^{23,24} Here, to obtain a quantitative measure of the degree of stratification, we use the full concentration profile of NPs and compute the average positions of SNPs and LNPs along the z direction (i.e., normal to the film) as $\langle z_i \rangle = \frac{1}{N_i} \sum_{n=1}^{N_i} z_{in}$ with $i \in \{l, s\}$ as well as the average separation $\langle z_l \rangle - \langle z_s \rangle$. The results are shown in Figures 3. At equilibrium, both $\langle z_l \rangle$ and $\langle z_s \rangle$ are very close to $H/2$, where $H \equiv H(0)$ is the equilibrium film thickness. If the i -type NPs are accumulated (depleted)

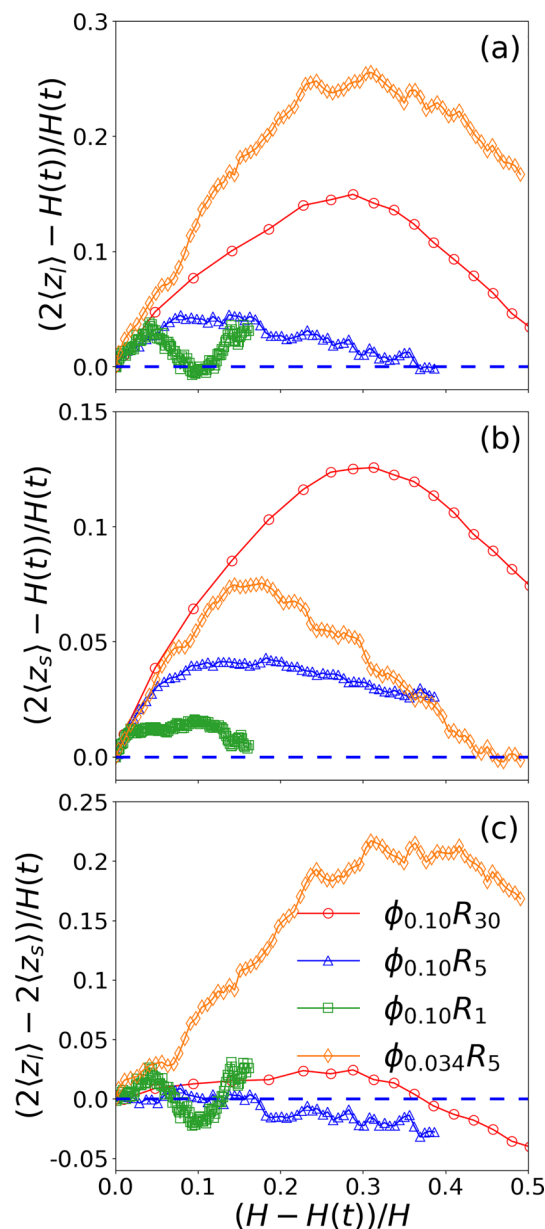


Figure 3. Average position in the z direction relative to the center of the film, normalized by $H(t)/2$, is plotted against the extent of drying, quantified as $(H - H(t))/H$, for (a) LNPs and (b) SNPs. Panel (c) shows the average separation between LNPs and SNPs, normalized by $H(t)/2$, as a function of the extent of drying. Data are for $\phi_{0.10}R_{30}$ (red circles), $\phi_{0.10}R_5$ (blue triangles), $\phi_{0.10}R_1$ (green squares), and $\phi_{0.034}R_5$ (orange diamonds).

near the liquid/vapor interface during evaporation, then $\langle z_i \rangle$ becomes larger (smaller) than $H(t)/2$ with $H(t)$ as the film thickness at time t . In Figures 3a and 3b we plot $\langle z_l \rangle - H(t)/2$ and $\langle z_s \rangle - H(t)/2$, all normalized by $H(t)/2$, against $(H - H(t))/H$, which quantifies the extent of drying. Figure 3a clearly shows that the LNPs accumulate near the interface for $\phi_{0.10}R_{30}$ (faster evaporation) and $\phi_{0.034}R_5$ (smaller ϕ_s), while they are depleted near the interface in the late stage of drying for $\phi_{0.10}R_5$ (reduced evaporation rate, larger ϕ_s). Figure 3b shows in the early stage of drying, the SNPs always accumulate near the receding interface, even for $Pe_s \approx 1$ as in $\phi_{0.10}R_1$.

In Figure 3c, we plot $\langle z_l \rangle - \langle z_s \rangle$, normalized by $H(t)/2$, as a function of $(H - H(t))/H$. A “small-on-top” stratifying state corresponds to $\langle z_l \rangle - \langle z_s \rangle < 0$ while a “large-on-top” case has $\langle z_l \rangle - \langle z_s \rangle > 0$. A larger negative (positive) value of $\langle z_l \rangle - \langle z_s \rangle$ indicates stronger small-on-top (large-on-top) stratification. If the distribution of NPs in the film is uniform, then $\langle z_l \rangle - \langle z_s \rangle \approx 0$. Our analyses show that the classification scheme adopted here yields results consistent with those based on concentration gradients of particles. To be consistent with the criteria used in the ZJD and SW models,^{23,28} we focus on the range of drying up to $H(t) = H/2$ and regard the state at this stage as the stratification outcome. Figure 3c shows that “small-on-top” only emerges at late times for $\phi_{0.10}R_{30}$ but occurs very quickly for $\phi_{0.10}R_5$. It is clear that “small-on-top” stratification is enhanced as Pe_s is reduced ($\phi_{0.10}R_{30} \rightarrow \phi_{0.10}R_5$). When Pe_s is reduced further, a “small-on-top” to “uniform” transition occurs ($\phi_{0.10}R_5 \rightarrow \phi_{0.10}R_1$). When ϕ_s is reduced at a given Pe_s , there is a transition from “small-on-top” to “large-on-top” ($\phi_{0.10}R_5 \rightarrow \phi_{0.034}R_5$: ϕ_s changes from 0.10 to 0.034).

In Figure 4, all 15 systems studied here are included in the state diagram in the Pe_s - ϕ_s plane and compared to the predictions of the ZJD model,²³ the SW model,²⁸ and the Sear model.²⁹ The four systems shown in Figures 1–3 are already classified. The identification of the stratifying outcome for the

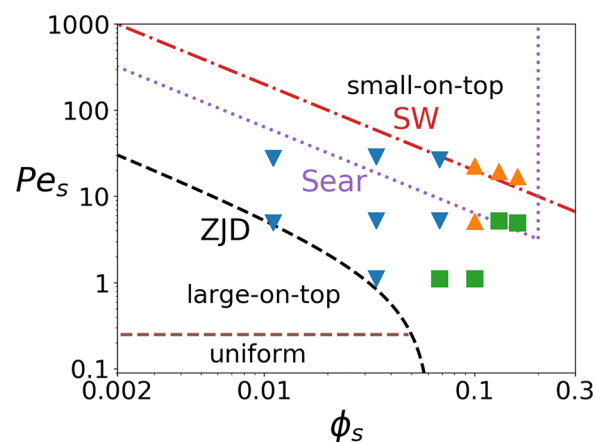


Figure 4. State diagram for the 15 systems studied here with the predictions of the ZJD model,²³ the SW model,²⁸ and the Sear model.²⁹ The systems showing “small-on-top” or “large-on-top” stratification are indicated by upward or downward triangles, respectively. The systems that do not show stratified distributions of NPs are designated as “uniform” and indicated with squares. The ZJD model predicts that “small-on-top” occurs when $Pe_s \gtrsim 1/(\alpha^2 \phi_s) - 1$ (black dashed line) and “uniform” occurs when $Pe_s < 1/\alpha$ (brown dashed line). The SW model predicts that “small-on-top” occurs when $Pe_s \gtrsim 2/\phi_s$ (red dash-dotted line). The Sear model predicts that “small-on-top” occurs only for a finite range of ϕ_s , corresponding to $0.64/Pe_s < \phi_s < 0.20$ (purple dotted line).

remaining 11 systems is included in the [Supporting Information](#). In our simulations, only four systems show “small-on-top” stratification, including $\phi_{0.10}R_{30}$, $\phi_{0.10}R_5$, $\phi_{0.13}R_{30}$, and $\phi_{0.16}R_{20}$. The other four systems have a uniform distribution of NPs after drying, including $\phi_{0.068}R_1$, $\phi_{0.10}R_1$, $\phi_{0.13}R_5$, and $\phi_{0.16}R_5$. The remaining seven exhibit “large-on-top” stratification. Note that all systems simulated here are in the “small-on-top” regime predicted by the ZJD model. However, the simulation data show that “small-on-top” stratification only occurs at Pe_s and ϕ_s much higher than the threshold value from the ZJD model that predicts $\alpha^2(Pe_s + 1)\phi_s > 1$. The comparison thus indicates that the ZJD model significantly overestimates “small-on-top” stratification, in agreement with Makepeace et al.²⁴ and Sear and Warren.²⁸

As discussed before, the Péclet numbers used to construct [Figure 4](#) are the lower bounds. If the temperature dependence of the diffusion constants were accounted for, then the actual Péclet numbers might even be higher, especially for high evaporation rates (i.e., for $\zeta = 30$ or 5), shifting the corresponding data points in [Figure 4](#) upward. Furthermore, the amount of shift is very small as the Péclet numbers enter [Figure 4](#) on a logarithmic scale. Considering the direction and degree of shift, [Figure 4](#) and the discussion below are not affected by the simplification adopted here that the Péclet numbers are defined using the diffusion constants in the solvent thermalized at $T = 1.0\epsilon/k_B$ (see [Methods](#) section for more details) and ignoring their potential variation during evaporation because of evaporative cooling.

It is challenging to distinguish the SW model and the Sear model using our simulation results. The SW model predicts that the “small-on-top” regime roughly corresponds to $Pe_s \gtrsim 2/\phi_s$.²⁸ Our data fit to this prediction reasonably well with three systems exhibiting “small-on-top” as expected by the SW model. This agreement indicates that the explicit solvent model used here has successfully captured the backflow of the solvent when NPs drift, as emphasized in the SW model. This backflow largely cancels out the osmotic pressure on LNPs from the concentration gradient of SNPs. As a result, much larger Pe_s and ϕ_s are needed to drive a system into the “small-on-top” regime. However, our simulations also indicate that the solvent develops negative temperature and positive density gradients for ultrafast evaporation because of evaporative cooling at the interface. The presence of thermophoretic effects associated with these density gradients can explain the deviation of the simulation results from the prediction of the SW model. For example, the system $\phi_{0.10}R_5$ is predicted to be in the “large-on-top” regime but actually shows “small-on-top” stratification, which as discussed earlier is due to thermophoresis of NPs from the density gradient of the solvent. As another example, the systems $\phi_{0.068}R_{30}$ is at the boundary of the “small-on-top” regime according to the SW model. However, for this ultrafast evaporating system the large positive gradient of solvent density pushes LNPs toward the interface much more strongly than SNPs; i.e., thermophoresis is significant. Consequently, $\phi_{0.068}R_{30}$ shows clear “large-on-top” stratification.

Our data also seem to be roughly consistent with the Sear model,²⁹ which predicts that “small-on-top” stratification only occurs when $0.64/Pe_s < \phi_s < 0.2$. [Figure 4](#) shows that the four “small-on-top” systems identified in our simulations are roughly consistent with this prediction. However, $\phi_{0.068}R_{30}$ and $\phi_{0.034}R_{30}$ are in the “small-on-top” regime predicted by the Sear model but actually are identified as “large-on-top” in our simulations. In these systems where ϕ_s is small, the thermophoretic effects

from the density gradients of the solvent dominate, which push LNPs toward the interface strongly and drive the systems into the “large-on-top” regime.

Both the SW and Sear models predict that the boundary of the “small-on-top” regime is roughly at $Pe_s\phi_s \gtrsim c$ with c at the order of 1.^{28,29} This prediction is supported by our simulation results. To test the Sear model further, one would need data for $\phi_s > 0.2$. However, with the present model, if ϕ_s is too large, some SNPs move into the vapor during evaporation.³⁷ At present, the regime of very high volume fractions of SNPs remains an open problem.

Limitations of the computational model used here should be noted. The SNPs in this study have a diameter about 5 times of the size of the solvent particle. If we denote the Péclet number of the solvent as Pe_0 , then $Pe_0 \simeq Pe_s/5$. In our simulations, Pe_s varies from about 1 to 30. As a result, Pe_0 is about 0.2–6. In most experiments, Pe_0 is much less than 0.1. This comparison indicates our simulations are all in the ultrafast evaporation regime from an experimental perspective.

Similar conclusions can be drawn if we examine the receding speed of the liquid/vapor interface, v . The lowest value of v in our simulations is $\sim 4 \times 10^{-5}\sigma/\tau$. With a typical value of σ/τ at 100 m/s, this speed is about 4 mm/s in simulations. For water evaporating under ambient conditions, v is typically about 0.1 $\mu\text{m/s}$. Recently, Utgenannt et al. used infrared radiation to speed up the evaporation of water and increased v to about 2 $\mu\text{m/s}$.¹⁰ In the experiment of Luo et al., v is about 2.5 $\mu\text{m/s}$.²¹ Even so, the value of v in our simulations is still about 2×10^3 times larger than that in the experiments. This large factor can be understood as follows. In a typical experiment on the drying of particle suspensions, the thickness of films is usually around 0.1–1 mm. However, in our simulations, the film thickness is about 300σ , or 150 nm if we set $\sigma = 0.5$ nm. To achieve the same Péclet number, $Pe \equiv vH/D$, the value of v in our simulations has to be larger than that in a typical experiment by a factor of about 10^3 – 10^4 . However, if a drying experiment was performed on a liquid film with submicrometer thickness containing NPs, the evaporation rates (i.e., the values of v) would have to be similar to those studied here in order to drive the system into the regime where “small-on-top” stratification might occur. Density/temperature gradients are expected to develop in such liquid films that undergo ultrafast drying and the thermophoretic effects found in our simulations may become experimentally relevant.

The solvent in this study is modeled as a LJ liquid at temperature $T = 1.0\epsilon/k_B$, where ϵ is the unit of energy (see the [Methods](#) section). This temperature is about $0.9T_c$, where T_c is the critical temperature of a LJ liquid. At this temperature the solvent can evaporate extremely fast, which leads to strong evaporative cooling and large density gradients near the interface. For water with $T_c = 647$ K, this condition would correspond to a temperature around 600 K and a pressure around 120 atm to maintain a liquid–vapor coexistence at this temperature. If water evaporates at 600 K into a vacuum, then the evaporation rate and the corresponding receding speed of the interface will be comparable to those in our simulations. The density gradients of the liquid are also expected to emerge in such systems.

In order to design MD simulations of the drying of NP suspensions that are more comparable to typical experiments, one would need to decrease v , but keep $Pe_s \sim 1$. One viable possibility is to decrease the diffusion constant of NPs. For example, larger particles can be used but they would require

more solvent particles to form suspensions, rendering very big systems that may be inaccessible with current computational resources. Another way is to make the solvent more viscous with regard to the diffusion of NPs but to maintain the liquid–vapor coexistence, which is needed for the evaporation process to be fast enough to be modeled via MD. Several options include tuning the NP–solvent interactions to slow down the diffusion of NPs or adding other solutes such as polymer chains into the suspension to increase its viscosity. The NP–NP interactions are another factor that may be explored. To be consistent with most theoretical models based on hard spheres, in this paper we set the direct NP–NP interactions to be purely repulsive, though there exist weak solvent-mediated attractions between NPs. It is interesting to see how the outcome of drying changes when NPs strongly attract each other. All these remain potential directions for future studies.

CONCLUSIONS

MD simulations with an explicit solvent are reported on the drying of bidisperse NP suspensions and indicate that “small-on-top” stratification occurs when the evaporation rate (quantified by the Péclet numbers of the NPs: Pe_l and Pe_s) and the volume fraction of the smaller particles (ϕ_s) are large enough. The boundary of the “small-on-top” regime is found to be roughly $Pe_s \phi_s \gtrsim c$ with $c \sim 1$, consistent with the SW model ($c = 2$)²⁸ and the Sear model ($c = 0.64$).²⁹ In the $Pe_s - \phi_s$ plane, this boundary is to the right of and above the boundary, roughly $Pe_s \phi_s \gtrsim \alpha^{-2}$ for small ϕ_s , predicted by the ZJD model that treats the solvent as an implicit viscous background.²³ The two predictions differ roughly by a factor of α^2 , which can be quite large if the particle size ratio $\alpha \gg 1$. As pointed out by Sear and Warren,²⁸ this is due to the fact that the implicit solvent model neglects the backflow of the solvent when particles drift, which largely cancels out the diffusiophoretic drift of LNPs induced by the concentration gradient of SNPs. As a result, the drift velocity of LNPs in a drying film is overestimated by a factor of α^2 by the implicit solvent model.^{19,23} Our results are consistent with the SW and Sear models, confirming that it is important to include the solvent explicitly in a physical model of stratification, or generally the drift of particles, in a suspension.

Our simulations further reveal that the solvent can develop positive density gradients in ultrafast evaporating suspensions because of evaporative cooling of the interface, which lead to thermophoretic effects on particle motion. For a bidisperse NP suspension undergoing quick drying ($Pe_l > Pe_s \gg 1$), the net thermophoretic effect is to push more LNPs toward the interfacial region. This effect can lead to “large-on-top” stratification at high Pe_s even when “small-on-top” stratification is expected. This deviation is due to thermophoresis which favors “large-on-top” and competes with a fast receding interface that drives “small-on-top” as emphasized in the diffusiophoretic models.^{19,23,28,29} Similar effect can also make “small-on-top” stratification stronger as the evaporation rate is reduced, since the thermophoretic driving which favors LNPs on top is mitigated. Our results confirm the necessity of considering solvent explicitly in theory and modeling. In the presence of gravity, a convective flow can form to balance the solvent gradient from ultrafast evaporation. This points to the potential need of considering convective flow in next-generation physical models of stratifying phenomena.

Because of thermophoresis that drives more LNPs toward the receding interface, the simulations reported here only show

weak “small-on-top” stratification when it actually occurs. In other cases, thermophoresis is strong enough that the stratification of large and small particles is reversed to “large-on-top” even when “small-on-top” is predicted by the diffusiophoretic models.^{28,29} In order to promote “small-on-top” stratification, thermophoresis needs to be suppressed. Indeed, we have observed stronger “small-on-top” stratification if all the liquid and vapor are thermalized at a constant temperature during evaporation, where thermal and density gradients and associated thermophoretic transport are removed. However, thermophoresis can also be exploited to produce “large-on-top” stratification under circumstances where it is not expected. Our results thus indicate that phoretic effects can be used as a knob to control the outcome of stratification. Work along this line is in progress and will be reported in the future.

METHODS

The solvent is modeled by beads with a mass m interacting through a standard Lennard-Jones (LJ) potential, $U_{LJ}(r) = 4\epsilon[(\sigma/r)^{12} - (\sigma/r)^6 - (\sigma/r_c)^{12} + (\sigma/r_c)^6]$, where r is the distance between the centers of two beads, ϵ the unit of energy, and σ the diameter of beads. The interaction is truncated at $r_c = 3.0\sigma$. The nanoparticles (NPs) are modeled as a uniform distribution of LJ particles of a mass density $1.0m/\sigma^3$. The diameter of a large nanoparticle (LNP) is $d_l = 20\sigma$ and of a small nanoparticle (SNP) is $d_s = 5\sigma$. The mass is $m_l = 4188.8m$ and $m_s = 65.4m$ for LNPs and SNPs, respectively. The NP–NP interaction potential can be determined analytically by integrating over all the interacting LJ particles within the two NPs.^{38,39} The same Hamaker constant $A_{ns} = 39.48\epsilon$ sets the strength of interaction between all the NPs. To avoid flocculation,^{40,41} we set the NP–NP interactions to be purely repulsive by truncating the potential at 20.574σ , 13.086σ , and 5.595σ for the LNP/LNP, LNP/SNP, and SNP/SNP pairs, respectively. The interaction between a solvent bead and a NP can be described similarly with an integrated LJ potential. We set the interaction strength between the solvent and the NPs as $A_{ns} = 100\epsilon$ and truncate the potential at $d/2 + 4\sigma$, where d is the NP diameter. As a result, both the LNPs and SNPs are fully solvated by the solvent.⁴²

All the solvent beads are placed in a rectangular simulation box with dimensions $L_x \times L_y \times L_z$, where $L_x = 201\sigma$, $L_y = 201\sigma$, and $L_z = 477\sigma$. These beads form a liquid film with a thickness $H \sim 300\sigma$ (see Table 1 for the value of H in each system), which serves as the solvent, and a vapor phase above it. Periodic boundary conditions are imposed in the x – y plane, in which the liquid/vapor interface is located. The NPs are randomly dispersed in the liquid solvent, and the system is equilibrated before evaporation is turned on. All the particles are confined between two flat walls at $z = 0$ and $z = L_z$ via a LJ 9–3 potential, $U_W(h) = \epsilon_W[(2/15)(D/h)^9 - (D/h)^3 - (2/15)(D/h_c)^9 + (D/h_c)^3]$, where $\epsilon_W = 2.0\epsilon$ is the interaction strength, D the characteristic length, h the distance between the center of the particle and the wall, and h_c the cutoff. We set $D = \sigma$ and $h_c = 3\sigma$ (0.8583σ) at the lower (upper) wall for the solvent/wall interactions; the upper wall is thus repulsive for the solvent. For the NP/wall interactions we set $D = d/2$ and $h_c = 0.8583D$ at both walls to make them purely repulsive for all the NPs.

All simulations were performed with the Large-scale Atomic/Molecular Massively Parallel Simulator (LAMMPS).⁴³ The equations of motion were integrated using a velocity-Verlet algorithm with a time step $\delta t = 0.01\tau$, where $\tau = \sigma(m/\epsilon)^{1/2}$ is the time unit. During the equilibration, Langevin dynamics

were applied to all the particles with a damping constant $\Gamma = 0.1\tau^{-1}$ at a reduced temperature $T = 1.0\epsilon/k_B$. We equilibrated the system for at least $4 \times 10^5\tau$ so that all the NPs were well dispersed in the solvent. In the evaporation runs, the Langevin thermostat was applied only for the solvent and the NPs within 10σ of the lower wall.³¹ The evaporation was implemented by removing the vapor beads in the deletion zone $[L_z - 100\sigma, L_z]$, which was about 70σ away from the equilibrium liquid/vapor interface. The evaporation rate was controlled by varying the rate at which the vapor beads in the deletion zone were removed from the system. As the initial thickness of the liquid film is about 300σ and we only focus on the range of drying where the film is still more than half of its initial thickness, the distance from the thermalized layer to the liquid/vapor interface is thus at least 140σ . This separation is more than sufficient to ensure that the evaporating behavior at the interface is not affected by the thermostat employed in our simulations.^{31,44}

■ ASSOCIATED CONTENT

📄 Supporting Information

The Supporting Information is available free of charge on the ACS Publications website at DOI: 10.1021/acs.langmuir.8b01334.

15 figures showing snapshots, temperature and density profiles, and order parameter plots of 11 systems including $\phi_{0.011R_{30}}$, $\phi_{0.011R_5}$, $\phi_{0.034R_{30}}$, $\phi_{0.034R_1}$, $\phi_{0.068R_{30}}$, $\phi_{0.068R_5}$, $\phi_{0.068R_1}$, $\phi_{0.13R_{30}}$, $\phi_{0.13R_5}$, $\phi_{0.16R_{30}}$, $\phi_{0.16R_5}$; two figures showing evidence of thermophoretic effects on NPs; one figure showing temperature profiles at various evaporation rates; one figure showing a pressure profile during evaporation (PDF)

Movies of the evolution of density profiles for all the 15 systems studied in this paper (ZIP)

■ AUTHOR INFORMATION

Corresponding Author

*E-mail: chengsf@vt.edu (S.C.).

ORCID

Gary S. Grest: 0000-0002-5260-9788

Shengfeng Cheng: 0000-0002-6066-2968

Notes

The authors declare no competing financial interest.

■ ACKNOWLEDGMENTS

Acknowledgment is made to the Donors of the American Chemical Society Petroleum Research Fund (PRF #56103-DNI6), for support of this research. This work was performed, in part, at the Center for Integrated Nanotechnologies, an Office of Science User Facility operated for the U.S. Department of Energy (DOE) Office of Science. Sandia National Laboratories is a multimission laboratory managed and operated by National Technology and Engineering Solutions of Sandia, LLC., a wholly owned subsidiary of Honeywell International, Inc., for the U.S. Department of Energy's National Nuclear Security Administration under Contract DE-NA-0003525.

■ REFERENCES

(1) Persad, A. H.; Ward, C. A. Expressions for the evaporation and condensation coefficients in the Hertz-Knudsen relation. *Chem. Rev.* **2016**, *116*, 7727–7767.

(2) Chen, J.-T.; Zhang, M.; Russell, T. P. Instabilities in nanoporous media. *Nano Lett.* **2007**, *7*, 183–187.

(3) Strawhecker, K.; Kumar, S.; Douglas, J.; Karim, A. The critical role of solvent evaporation on the roughness of spin-cast polymer films. *Macromolecules* **2001**, *34*, 4669–4672.

(4) Shin, J. M.; Kim, Y.; Yun, H.; Yi, G.-R.; Kim, B. J. Morphological evolution of block copolymer particles: Effect of solvent evaporation rate on particle shape and morphology. *ACS Nano* **2017**, *11*, 2133–2142.

(5) Jouault, N.; Zhao, D.; Kumar, S. K. Role of casting solvent on nanoparticle dispersion in polymer nanocomposites. *Macromolecules* **2014**, *47*, 5246–5255.

(6) Arciniegas, M. P.; Castelli, A.; Ceseracciu, L.; Bianchini, P.; Marras, S.; Brescia, R.; Manna, L. Assembly of branched colloidal nanocrystals in polymer films leads to enhanced viscous deformation resistance. *Nano Lett.* **2016**, *16*, 6154–6163.

(7) Bigioni, T. P.; Lin, X.-M.; Nguyen, T. T.; Corwin, E. I.; Witten, T. A.; Jaeger, H. M. Kinetically driven self-assembly of highly ordered nanoparticle monolayers. *Nat. Mater.* **2006**, *5*, 265–270.

(8) Dickey, M. D.; Weiss, E. A.; Smythe, E. J.; Chiechi, R. C.; Capasso, F.; Whitesides, G. M. Fabrication of arrays of metal and metal oxide nanotubes by shadow evaporation. *ACS Nano* **2008**, *2*, 800–808.

(9) Chen, J.; Liao, W.-S.; Chen, X.; Yang, T.; Wark, S. E.; Son, D. H.; Batteas, J. D.; Cremer, P. S. Evaporation-induced assembly of quantum dots into nanorings. *ACS Nano* **2009**, *3*, 173–180.

(10) Utgenannt, A.; Maspero, R.; Fortini, A.; Turner, R.; Florescu, M.; Jaynes, C.; Kanaras, A. G.; Muskens, O. L.; Sear, R. P.; Keddie, J. L. Fast assembly of gold nanoparticles in large-area 2D nanogrids using a one-step, near-infrared radiation-assisted evaporation process. *ACS Nano* **2016**, *10*, 2232–2242.

(11) Reinhart, W. F.; Long, A. W.; Howard, M. P.; Ferguson, A. L.; Panagiotopoulos, A. Z. Machine learning for autonomous crystal structure identification. *Soft Matter* **2017**, *13*, 4733–4745.

(12) Cheng, S.; Stevens, M. J.; Grest, G. S. Ordering nanoparticles with polymer brushes. *J. Chem. Phys.* **2017**, *147*, 224901.

(13) Routh, A. F.; Zimmerman, W. B. Distribution of particles during solvent evaporation from films. *Chem. Eng. Sci.* **2004**, *59*, 2961–2968.

(14) Routh, A. F. Drying of thin colloidal films. *Rep. Prog. Phys.* **2013**, *76*, 046603.

(15) Trueman, R. E.; Lago Domingues, E.; Emmett, S. N.; Murray, M. W.; Routh, A. F. Auto-stratification in drying colloidal dispersions: A diffusive model. *J. Colloid Interface Sci.* **2012**, *377*, 207–212.

(16) Trueman, R. E.; Lago Domingues, E.; Emmett, S. N.; Murray, M. W.; Keddie, J. L.; Routh, A. F. Autostratification in drying colloidal dispersions: Experimental investigations. *Langmuir* **2012**, *28*, 3420–3428.

(17) Atmuri, A. K.; Bhatia, S. R.; Routh, A. F. Autostratification in drying colloidal dispersions: Effect of particle interactions. *Langmuir* **2012**, *28*, 2652–2658.

(18) Nikiforow, I.; Adams, J.; König, A. M.; Langhoff, A.; Pohl, K.; Turshatov, A.; Johannsmann, D. Self-stratification during film formation from latex blends driven by differences in collective diffusivity. *Langmuir* **2010**, *26*, 13162–13167.

(19) Fortini, A.; Martín-Fabiani, I.; De La Haye, J. L.; Dugas, P.-Y.; Lansalot, M.; D'Agosto, F.; Bourgeat-Lami, E.; Keddie, J. L.; Sear, R. P. Dynamic stratification in drying films of colloidal mixtures. *Phys. Rev. Lett.* **2016**, *116*, 118301.

(20) Fortini, A.; Sear, R. P. Stratification and size segregation of ternary and polydisperse colloidal suspensions during drying. *Langmuir* **2017**, *33*, 4796–4805.

(21) Luo, H.; Cardinal, C. M.; Scriven, L. E.; Francis, L. F. Ceramic nanoparticle/monodisperse latex coatings. *Langmuir* **2008**, *24*, 5552–5561.

(22) Howard, M. P.; Nikoubashman, A.; Panagiotopoulos, A. Z. Stratification dynamics in drying colloidal mixtures. *Langmuir* **2017**, *33*, 3685–3693.

(23) Zhou, J.; Jiang, Y.; Doi, M. Cross interaction drives stratification in drying film of binary colloidal mixtures. *Phys. Rev. Lett.* **2017**, *118*, 108002.

(24) Makepeace, D. K.; Fortini, A.; Markov, A.; Locatelli, P.; Lindsay, C.; Moorhouse, S.; Lind, R.; Sear, R. P.; Keddie, J. L. Stratification in binary colloidal polymer films: experiment and simulations. *Soft Matter* **2017**, *13*, 6969–6980.

(25) Liu, X.; Liu, W.; Carr, A. J.; Vazquez, D. S.; Nykypanchuk, D.; Majewski, P. W.; Routh, A. F.; Bhatia, S. R. Stratification during evaporative assembly of multicomponent nanoparticle films. *J. Colloid Interface Sci.* **2018**, *515*, 70–77.

(26) Martín-Fabiani, I.; Fortini, A.; Lesage de la Haye, J.; Koh, M. L.; Taylor, S. E.; Bourgeat-Lami, E.; Lansalot, M.; D'Agosto, F.; Sear, R. P.; Keddie, J. L. pH-switchable stratification of colloidal coatings: surfaces “on Demand. *ACS Appl. Mater. Interfaces* **2016**, *8*, 34755–34761.

(27) Asakura, S.; Oosawa, F. On interaction between two bodies immersed in a solution of macromolecules. *J. Chem. Phys.* **1954**, *22*, 1255.

(28) Sear, R. P.; Warren, P. B. Diffusiophoresis in nonadsorbing polymer solutions: The Asakura-Oosawa model and stratification in drying films. *Phys. Rev. E* **2017**, *96*, 062602.

(29) Sear, R. P. Stratification of mixtures in evaporating liquid films occurs only for a range of volume fractions of the smaller component. *J. Chem. Phys.* **2018**, *148*, 134900.

(30) Okuzono, T.; Ozawa, K.; Doi, M. Simple model of skin formation caused by solvent evaporation in polymer solutions. *Phys. Rev. Lett.* **2006**, *97*, 136103.

(31) Cheng, S.; Lechman, J. B.; Plimpton, S. J.; Grest, G. S. Evaporation of Lennard-Jones fluids. *J. Chem. Phys.* **2011**, *134*, 224704.

(32) The simulation results with $\zeta = 30$ or 20 are very close to those obtained with the solvent evaporating into a vacuum.

(33) Cheng, S.; Grest, G. S. Molecular dynamics simulations of evaporation-induced nanoparticle assembly. *J. Chem. Phys.* **2013**, *138*, 064701.

(34) The radius of the spherical excluded volume of a SNP (LNP) is determined to be 3.12σ (10.6σ), which is 0.62σ (0.6σ) larger than its nominal radius.

(35) Brenner, H. Phoresis in fluids. *Phys. Rev. E* **2011**, *84*, 066317.

(36) Cheng, S.; Grest, G. S. Dispersing nanoparticles in a polymer film via solvent evaporation. *ACS Macro Lett.* **2016**, *5*, 694–698.

(37) We have observed that some SNPs (~ 500) moved into the vapor during solvent evaporation for $\phi_s = 0.13$ and 0.16 . These SNPs are excluded from the analyses presented here.

(38) Everaers, R.; Ejtehadi, M. R. Interaction potentials for soft and hard ellipsoids. *Phys. Rev. E* **2003**, *67*, 041710.

(39) in 't Veld, P. J.; Plimpton, S. J.; Grest, G. S. Accurate and efficient methods for modeling colloidal mixtures in an explicit solvent using molecular dynamics. *Comput. Phys. Commun.* **2008**, *179*, 320–329.

(40) in 't Veld, P. J.; Petersen, M. K.; Grest, G. S. Shear thinning of nanoparticle suspensions. *Phys. Rev. E* **2009**, *79*, 021401.

(41) Grest, G. S.; Wang, Q.; in't Veld, P.; Keffer, D. J. Effective potentials between nanoparticles in suspension. *J. Chem. Phys.* **2011**, *134*, 144902.

(42) Cheng, S.; Grest, G. S. Structure and diffusion of nanoparticle monolayers floating at liquid/vapor interfaces: A molecular dynamics study. *J. Chem. Phys.* **2012**, *136*, 214702.

(43) Plimpton, S. Fast parallel algorithms for short-range molecular dynamics. *J. Comput. Phys.* **1995**, *117*, 1–19.

(44) Heinen, M.; Vrabec, J.; Fischer, J. Evaporation: Influence of heat transport in the liquid on the interface temperature and the particle flux. *J. Chem. Phys.* **2016**, *145*, 081101.